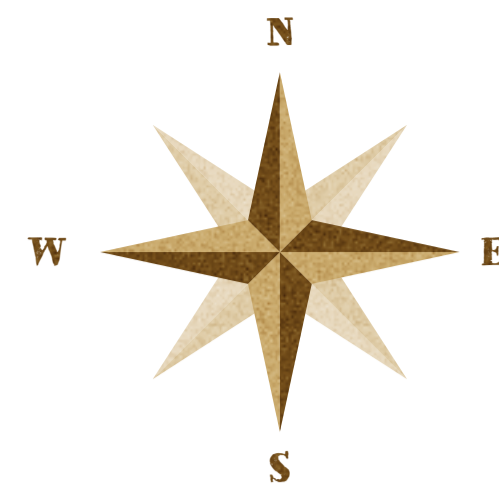




Alto Piemonte

A L P S



MONTE ROSA
4634 mt

District of Biella

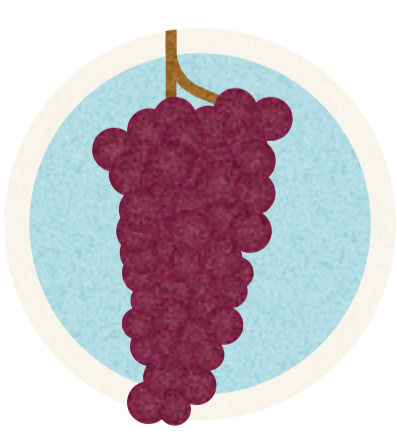
LAGO MAGGIORE



← TORINO

ALBA (LANGHE)

MILANO →



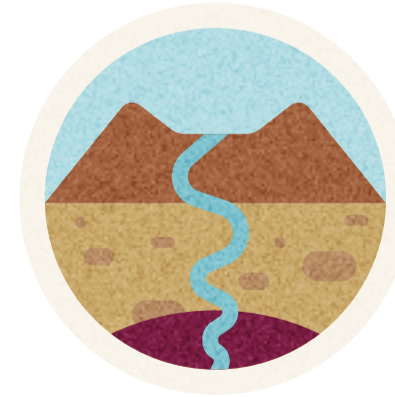
GRAPES
Nebbiolo
Croatina
Vespolina
Uva Rara
Erbaluce white



BOCA SOIL
porphyry,
tufa,
granitic
pebbles



GHEMME SOIL
clay, kaolin,
tufa, rocks,
pebbles and
sediments



GEOLOGICAL RELEVANCE
Supervolcano
Valsesia



SKI RESORTS



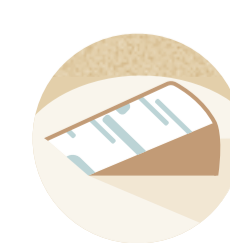
MAGGIORINA VINEYARDS



LOCAL FAUNA



TEXTILE PRODUCTION



PRODUCTION OF "GORGONZOLA D.O.P."



RICE PRODUCTION